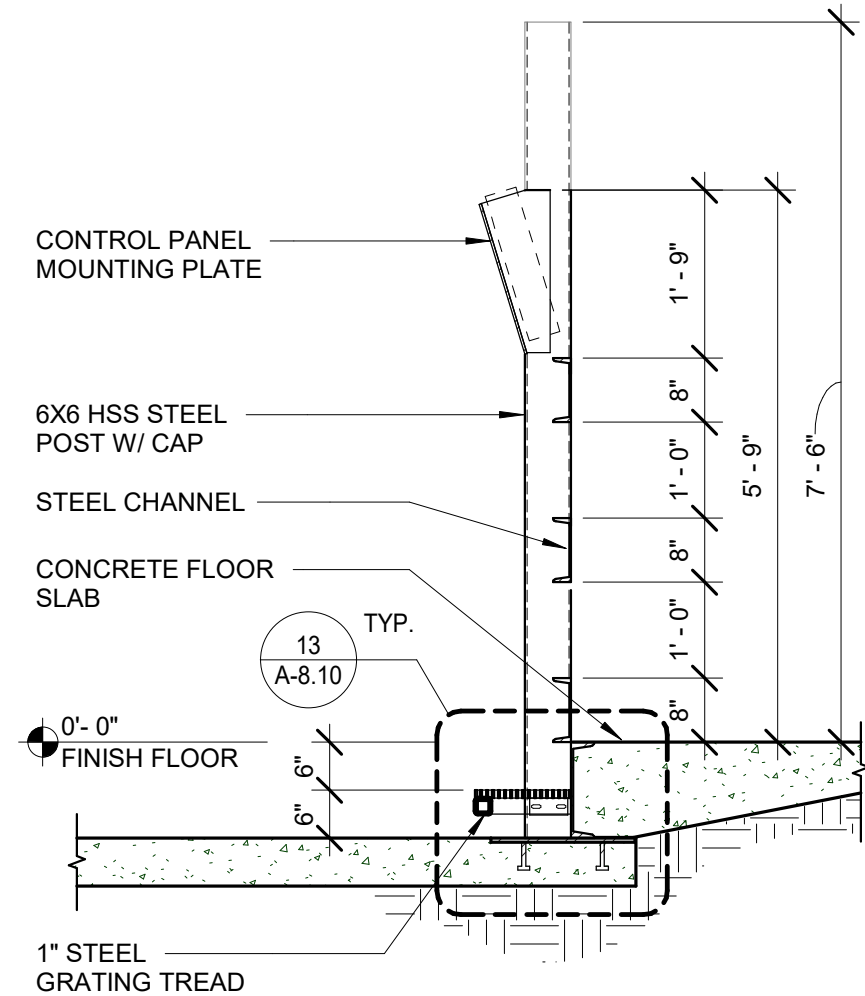
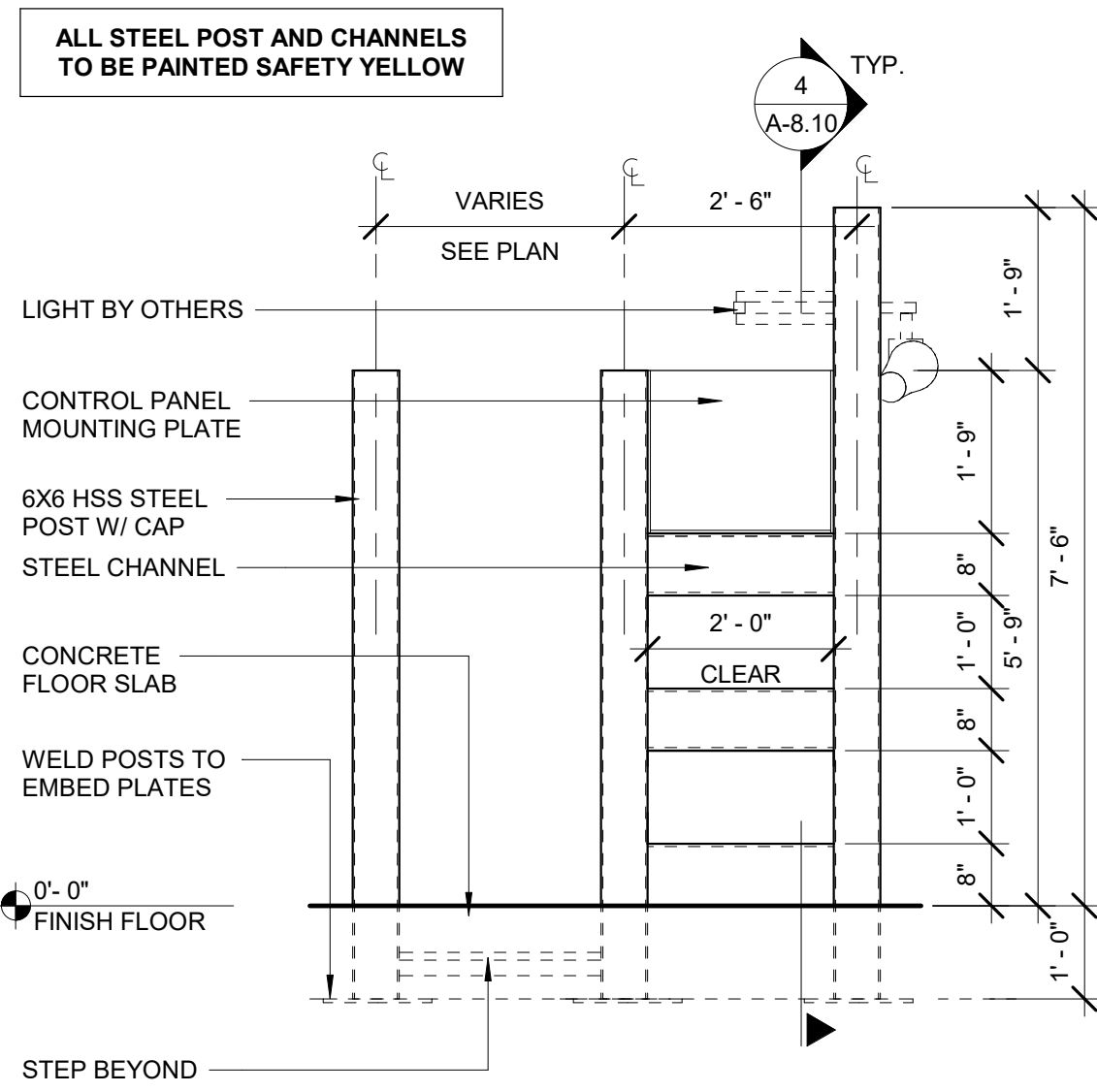


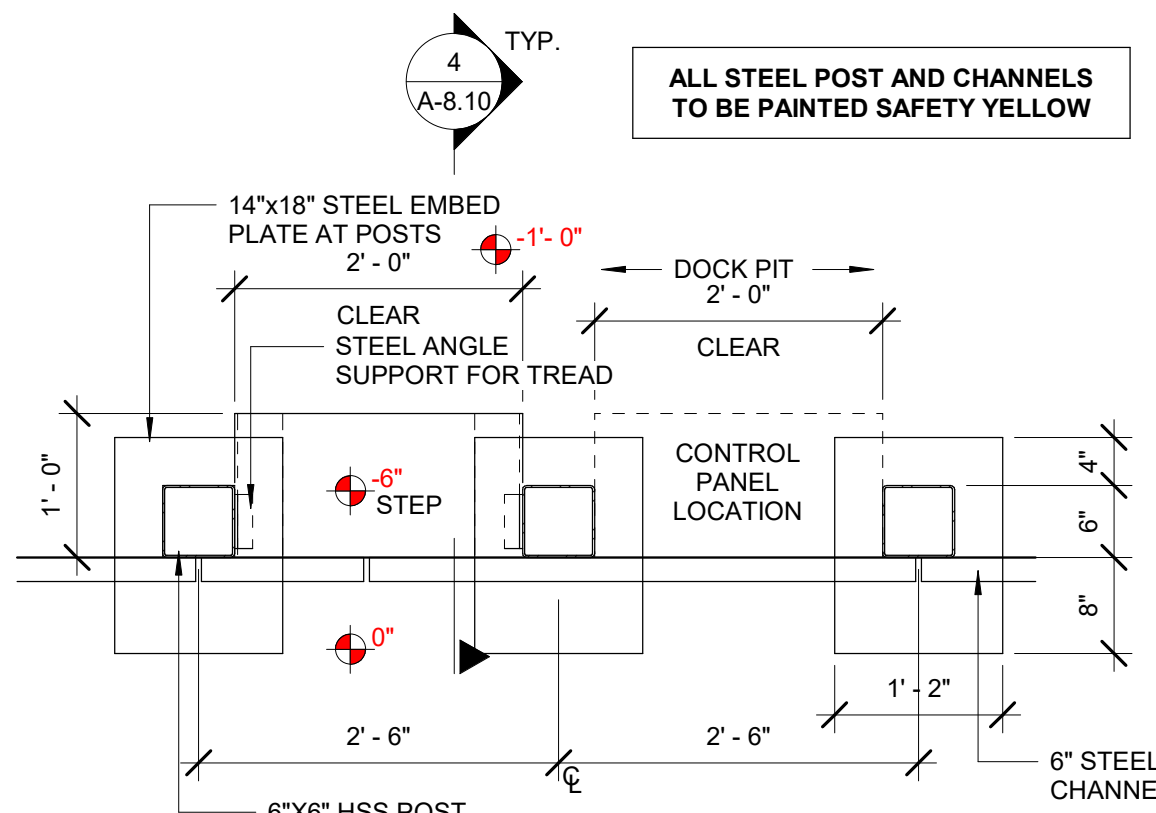
| SUBMITTALS | | |
|------------|------------|--------------|
| NO. | DATE | DESCRIPTION |
| 0 | 05.27.2022 | PROGRESS SET |



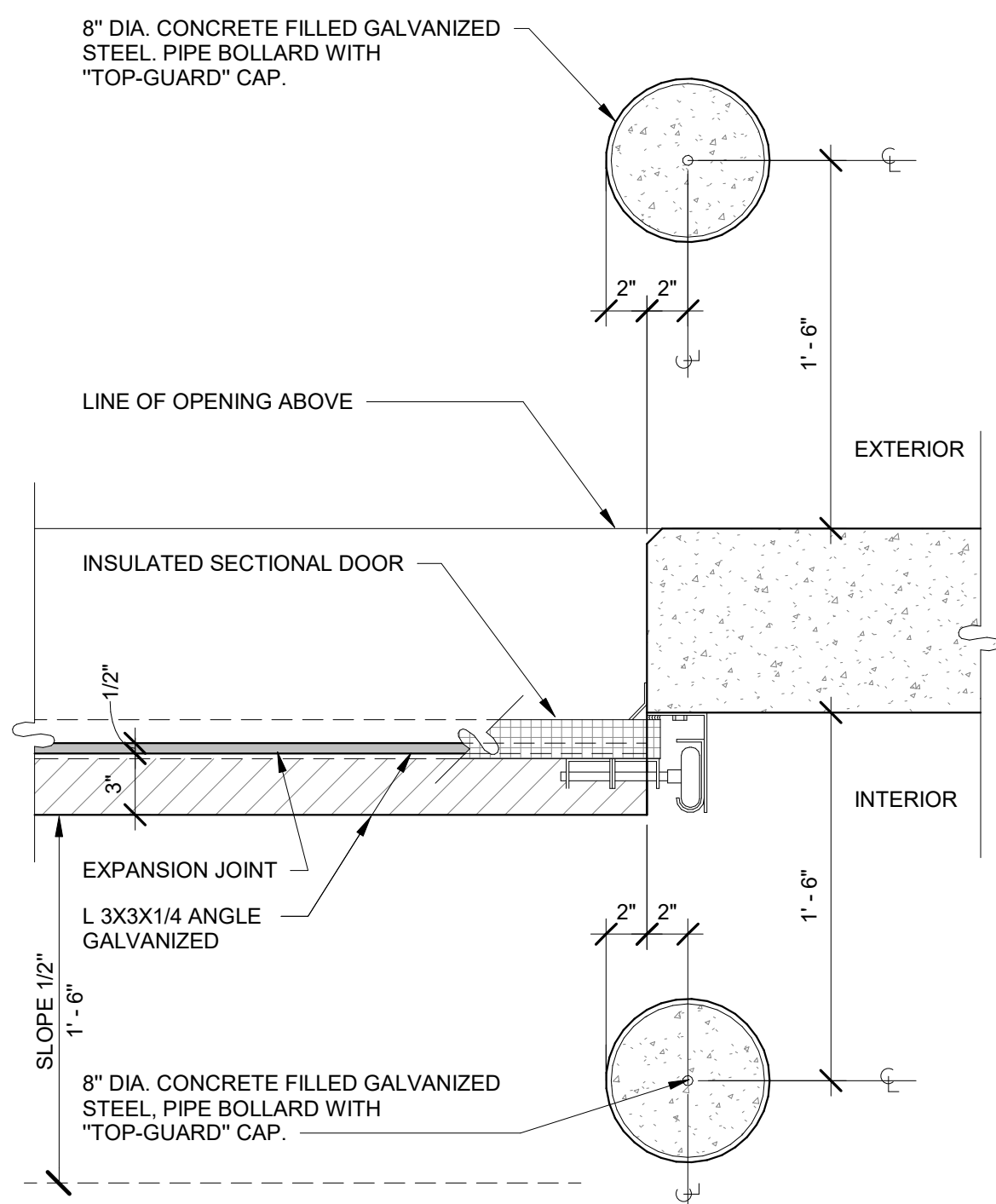
DOCK RAIL SECTION AT DOCK PIT
SCALE: 1/2" = 1'-0"



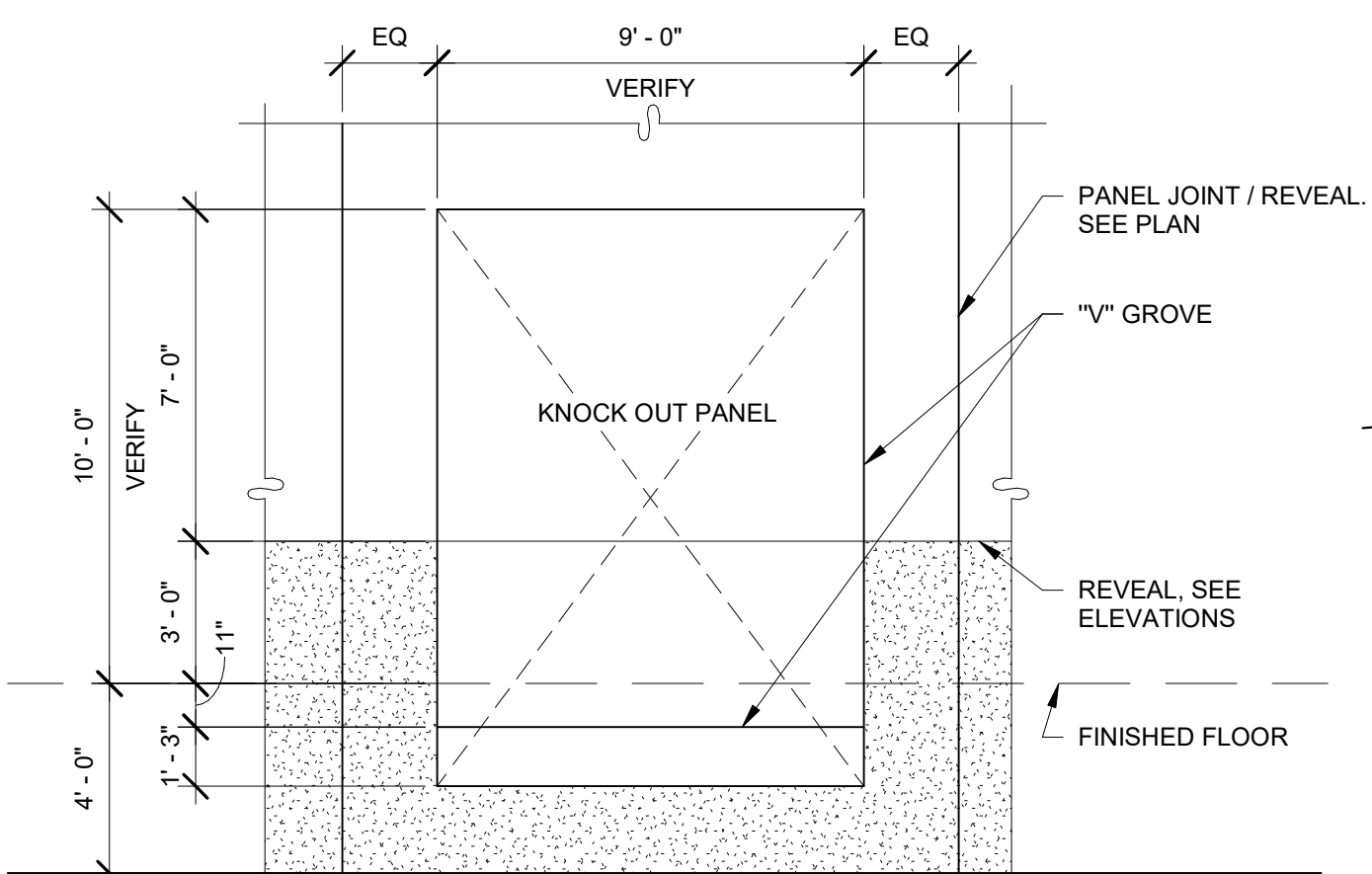
DOCK RAIL ELEVATION AT DOCK PIT
SCALE: 1/2" = 1'-0"



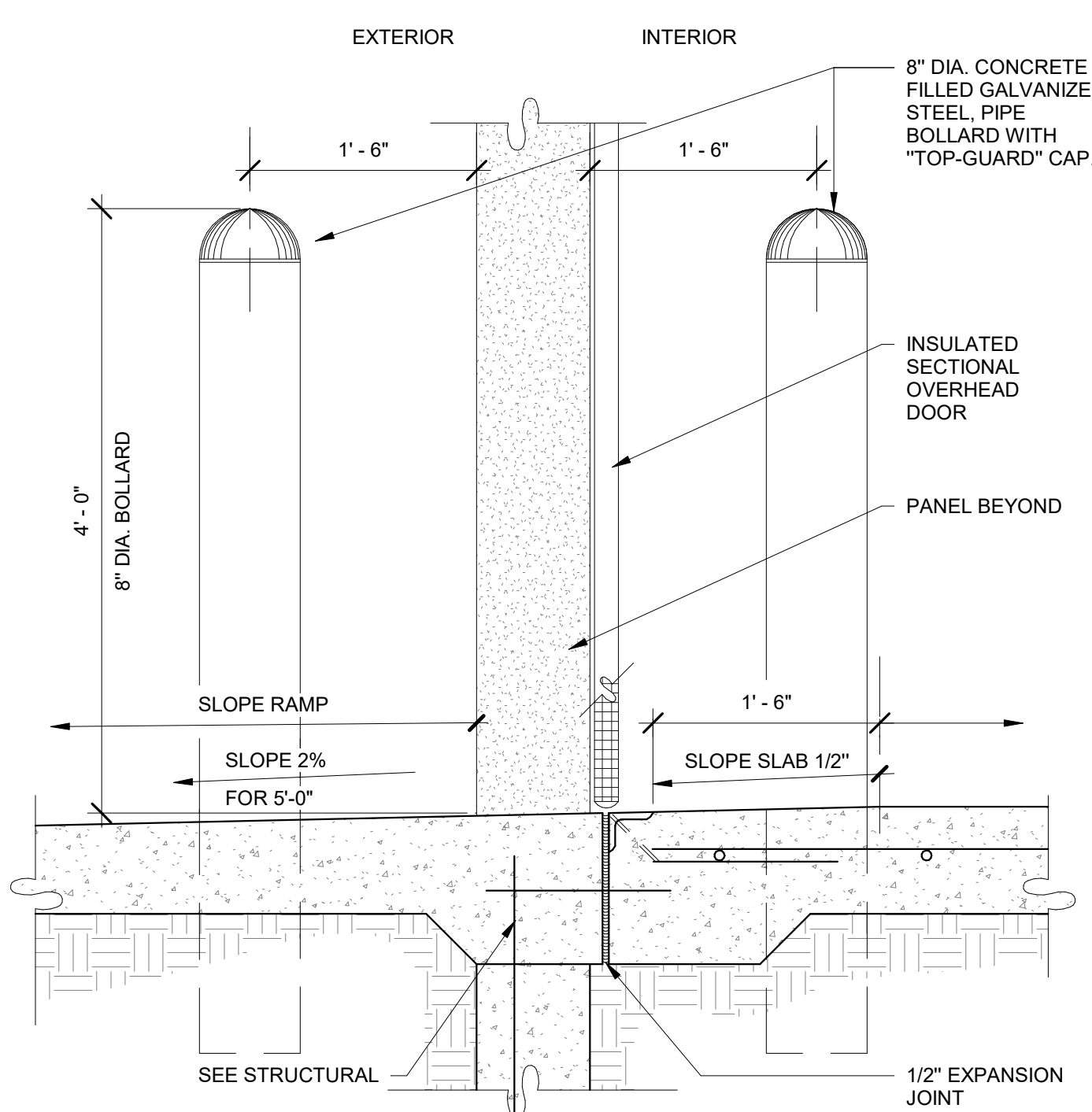
DOCK RAIL AND STAIR PLAN
SCALE: 3/4" = 1'-0"



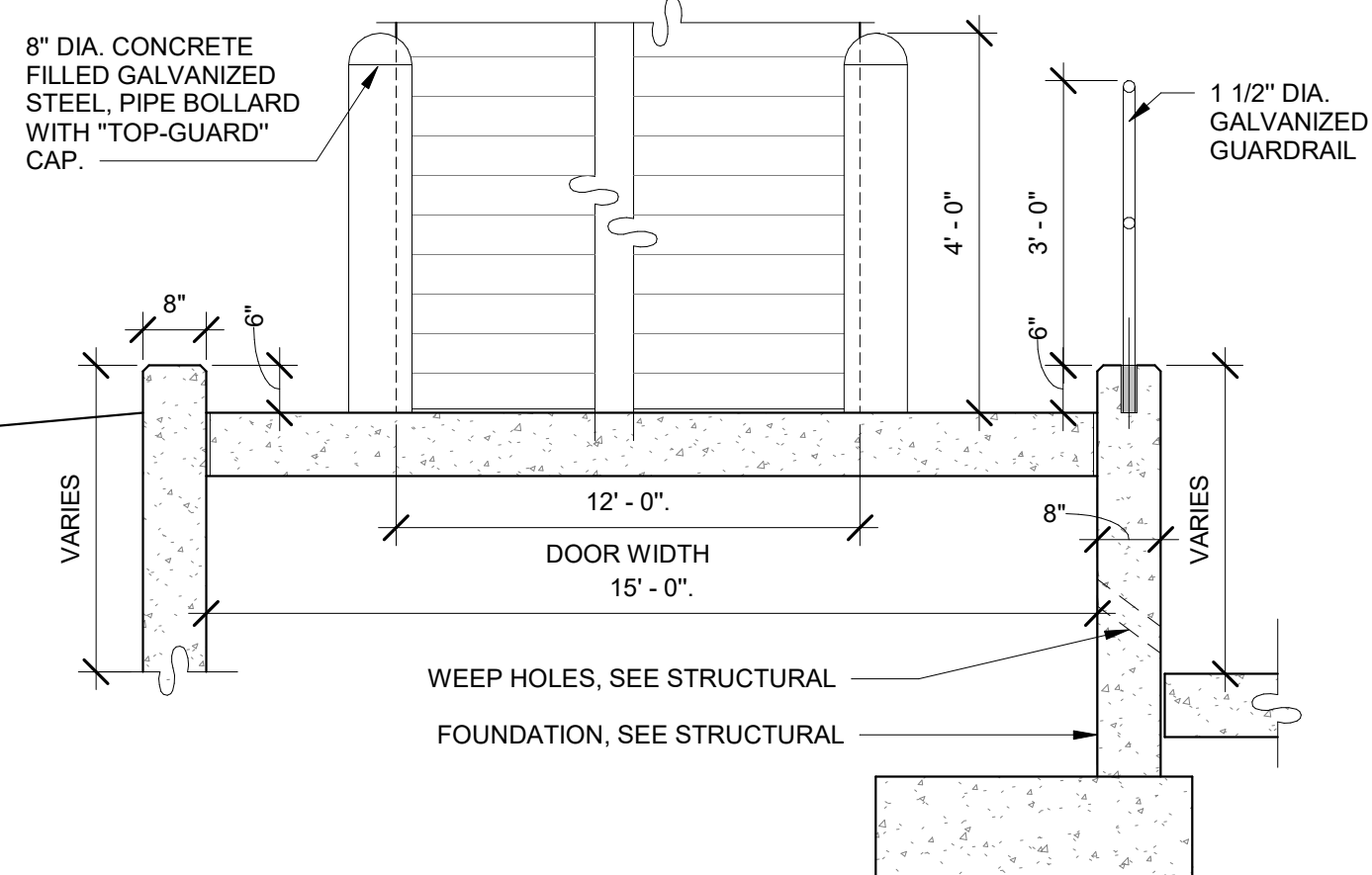
OVERHEAD DOOR - JAMB DETAIL
A8.2 | REVISION DATE: 11.12.2018 | SCALE: 1/2" = 1'-0"



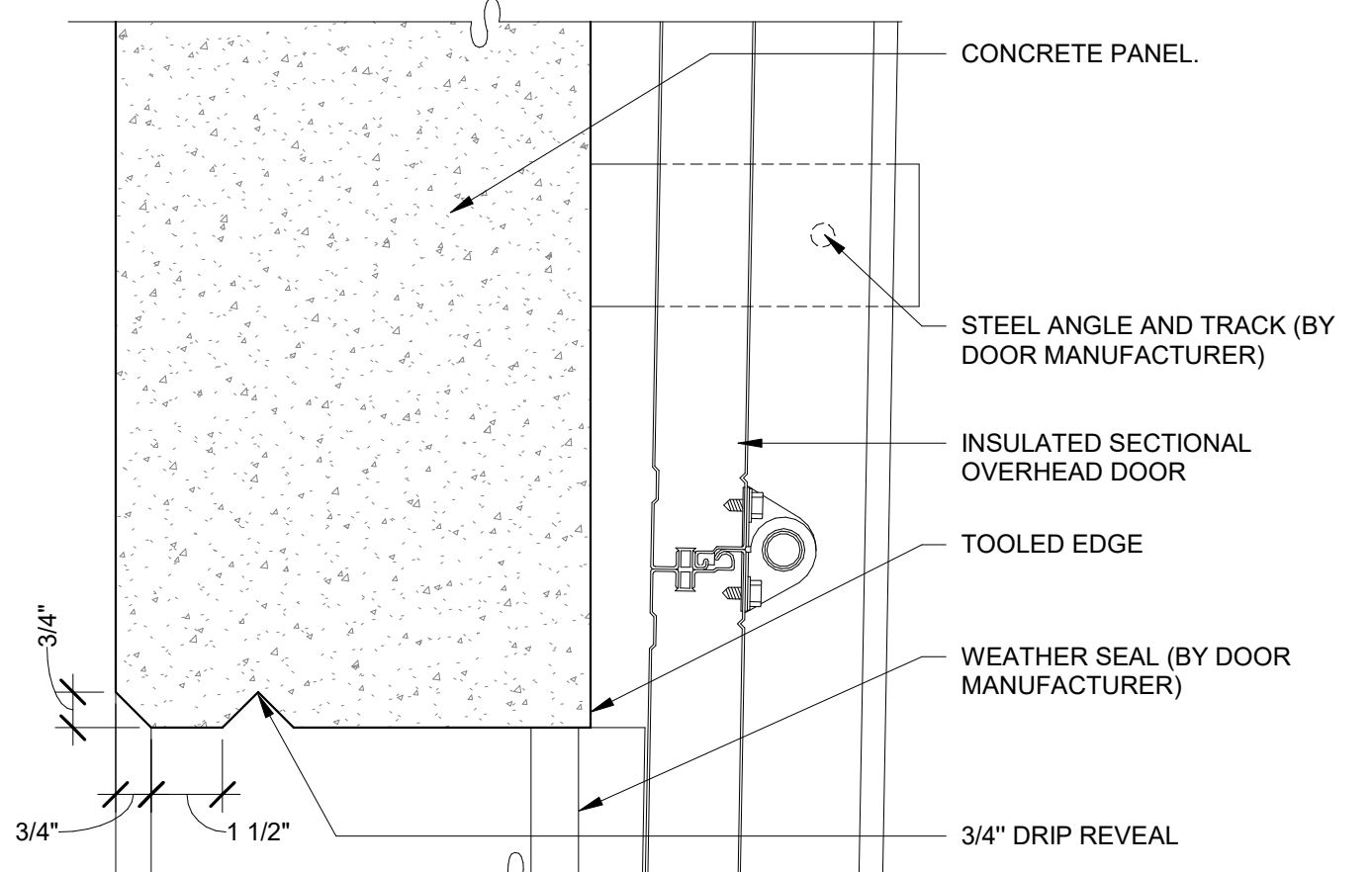
DOCK K.O. PANEL - ELEVATION
A8.9 | REVISION DATE: 11.12.2018 | SCALE: 1/4" = 1'-0"



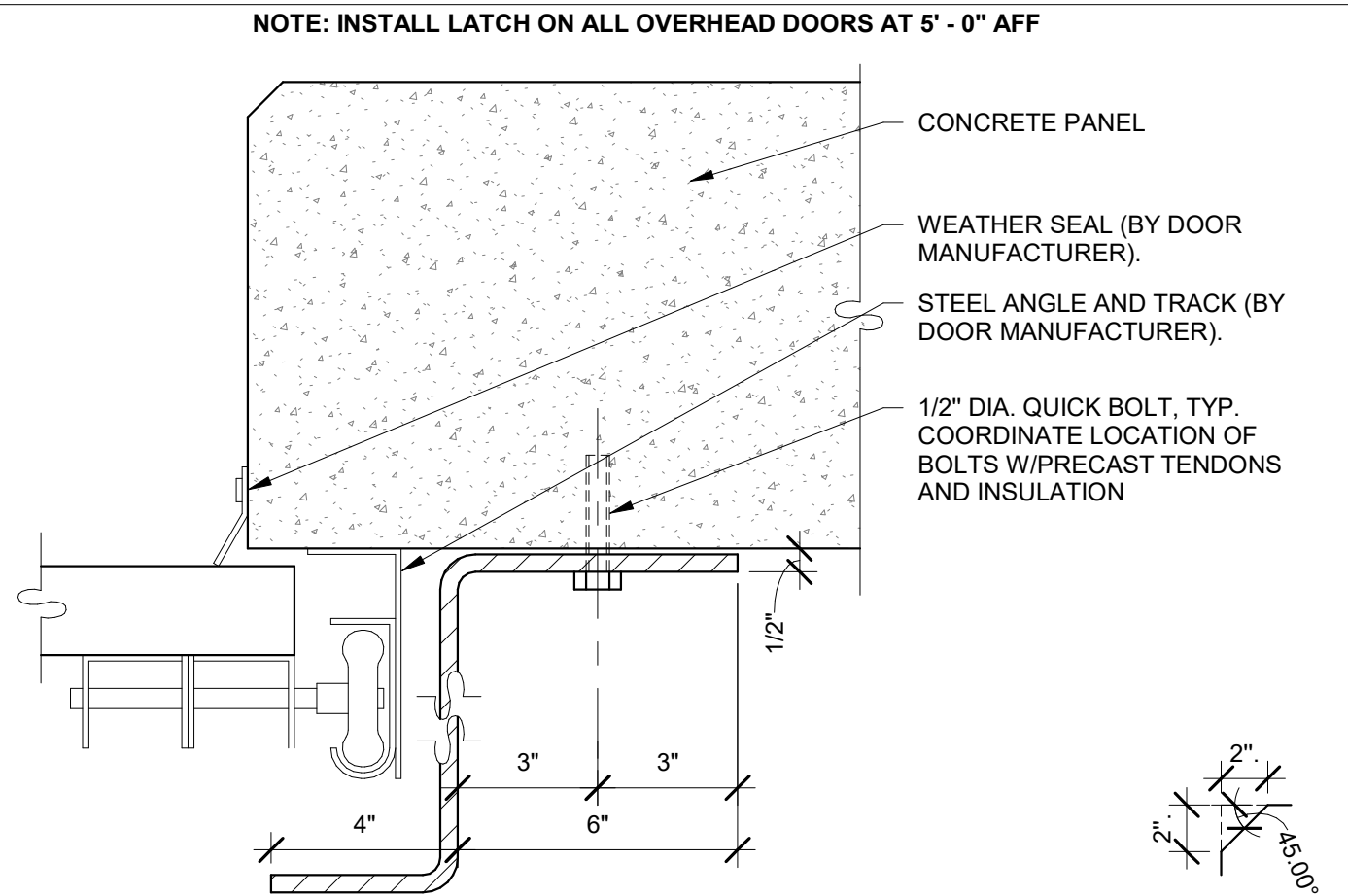
OVERHEAD DOOR - SILL DETAIL
A8.3 | REVISION DATE: 11.12.2018 | SCALE: 1" = 1'-0"



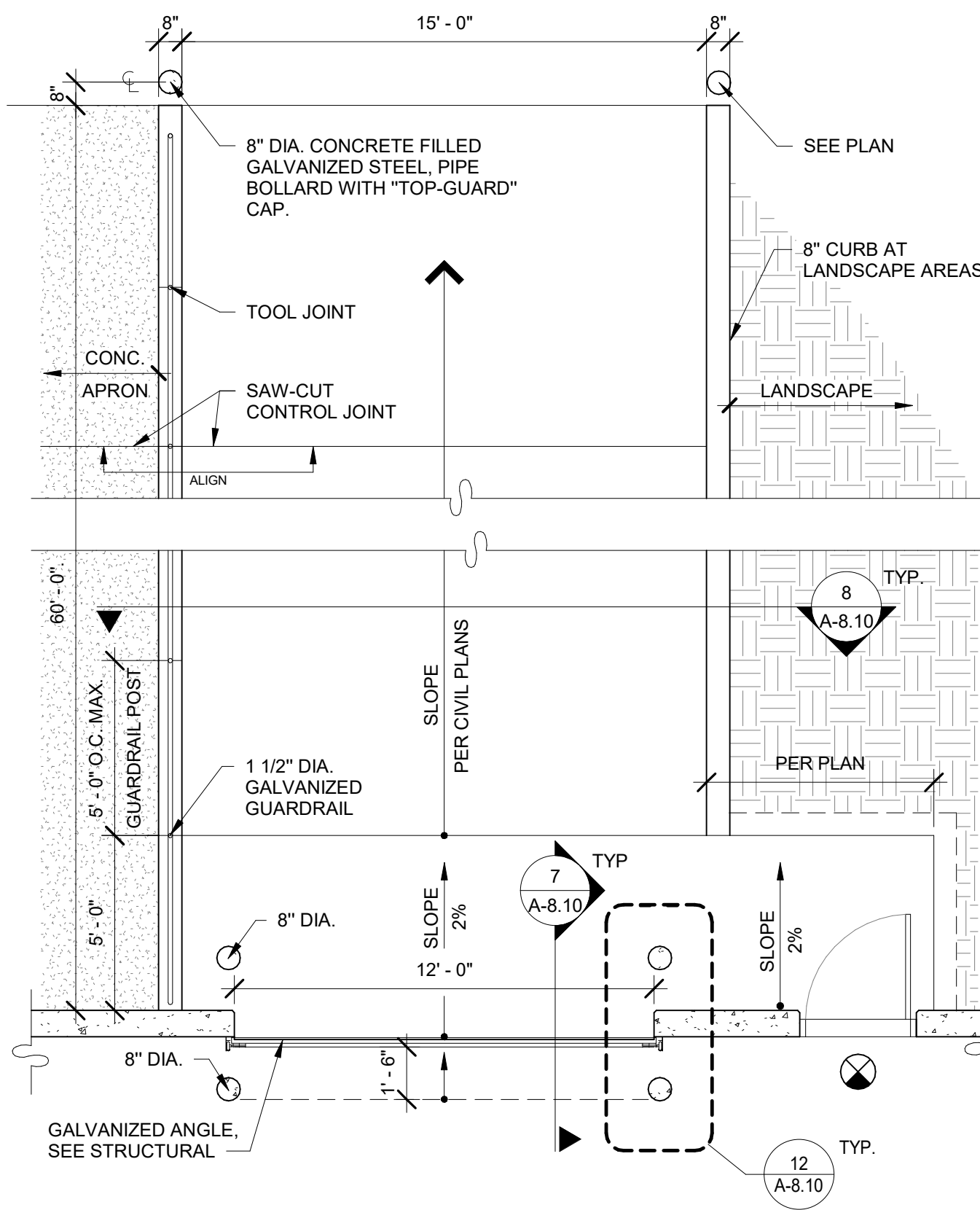
OVERHEAD DOOR - ELEVATION
A8.4 | REVISION DATE: 11.12.2018 | SCALE: 1/2" = 1'-0"



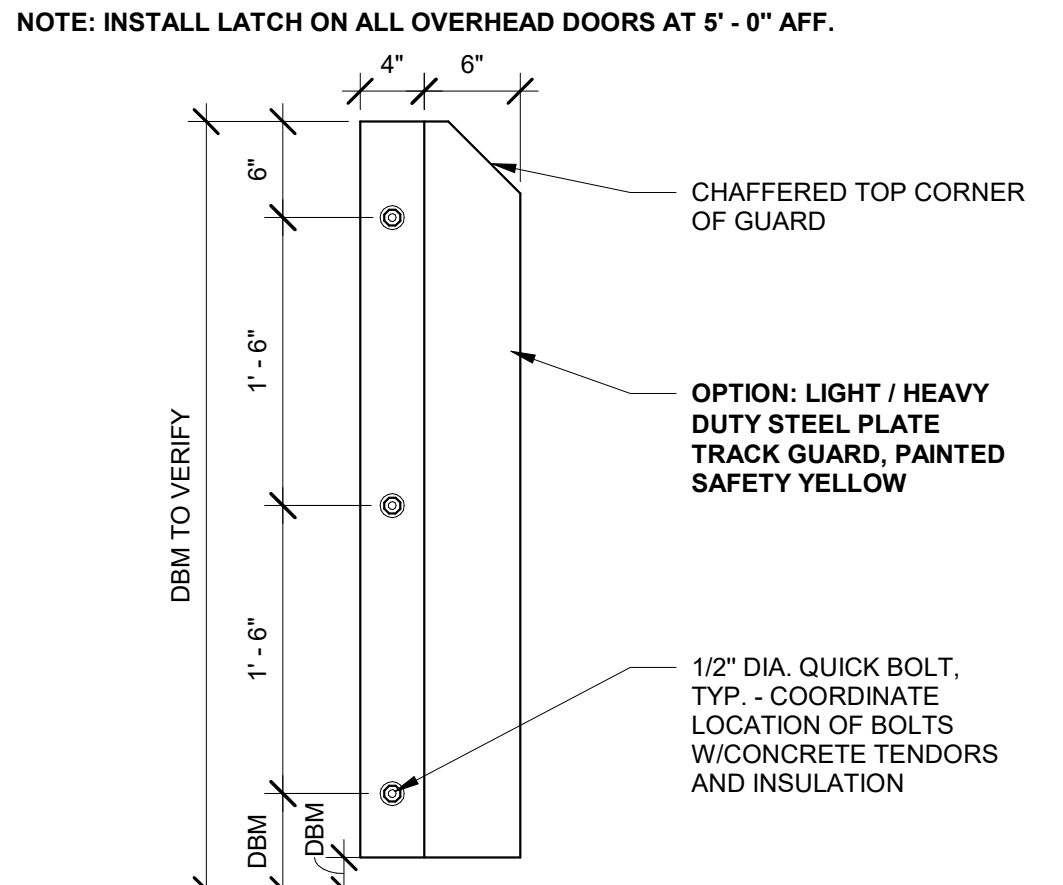
OVERHEAD DOOR - HEAD DETAIL
A8.5 | REVISION DATE: 06.03.2020 | SCALE: 3/4" = 1'-0"



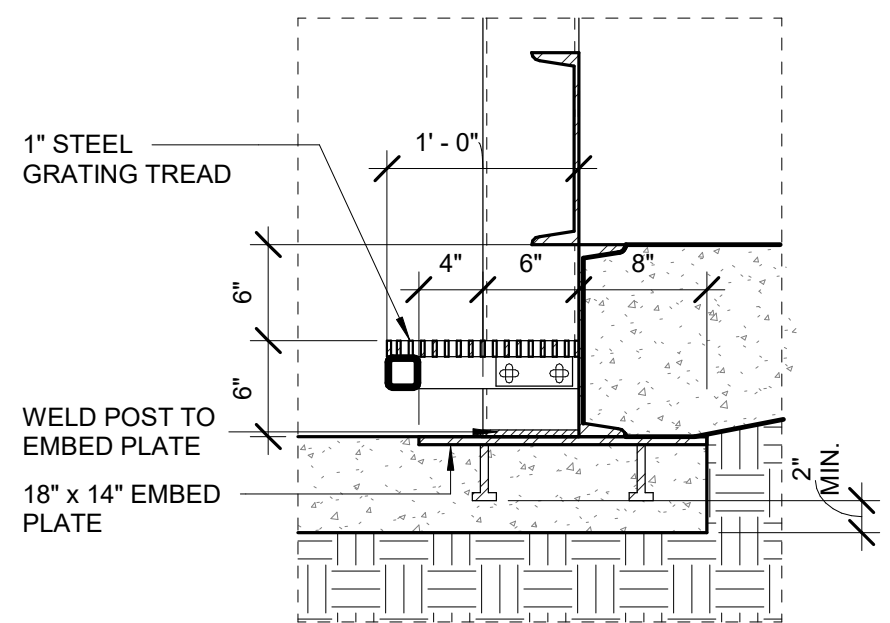
OVERHEAD DOOR - JAMB DETAIL
A8.6 | REVISION DATE: 11.12.2018 | SCALE: 3/4" = 1'-0"



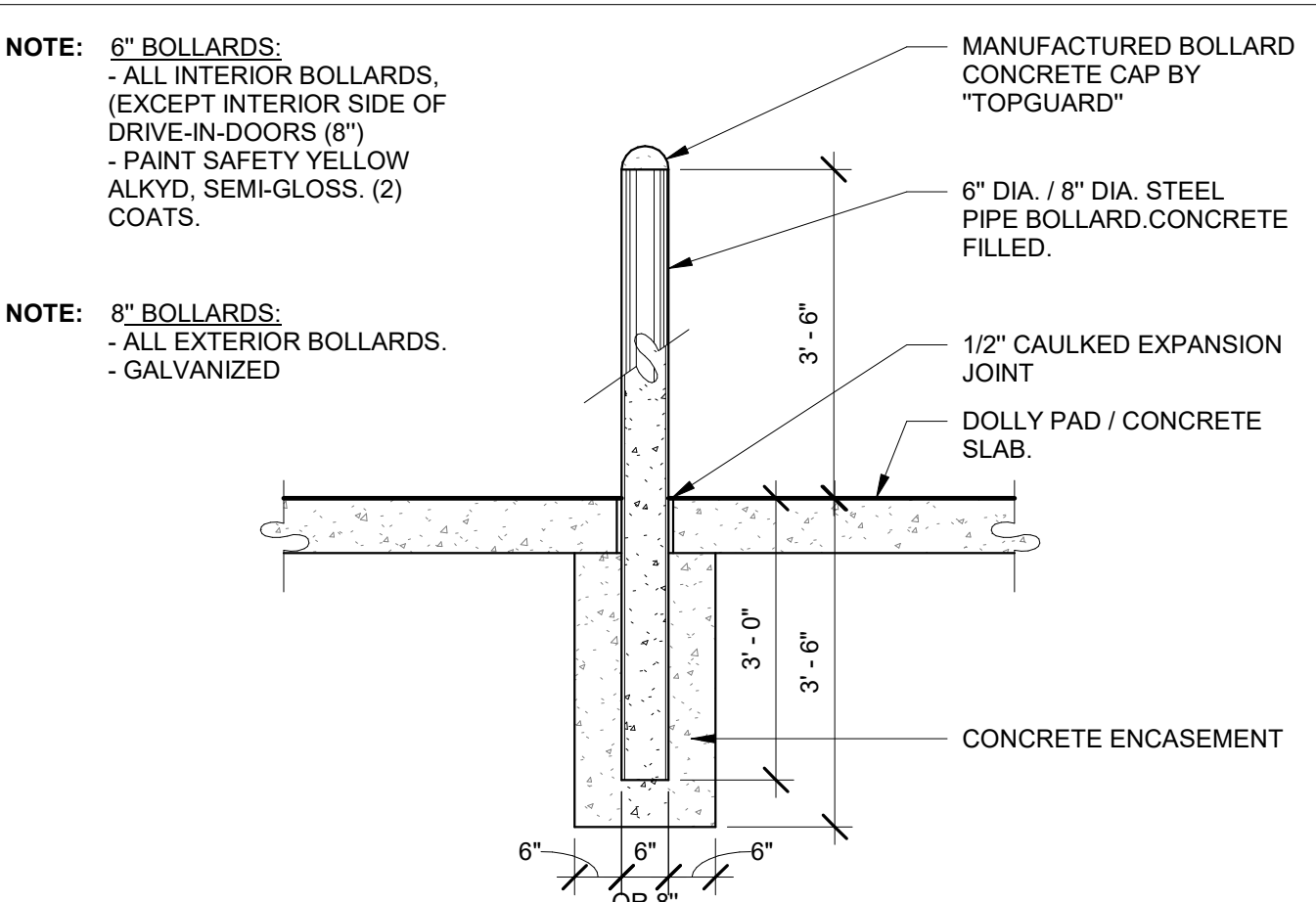
DRIVE-IN RAMP
A8.1 | REVISION DATE: 12.11.2018 | SCALE: 1/4" = 1'-0"



Z-GUARD - WALL MOUNTED
A8.8 | REVISION DATE: 04.23.2019 | SCALE: 1" = 1'-0"



DETAIL AT DOCK PIT BASE
SCALE: 1" = 1'-0"



BOLLARD SECTION
A2.9 | REVISION DATE: 11.12.2018 | SCALE: 1/2" = 1'-0"